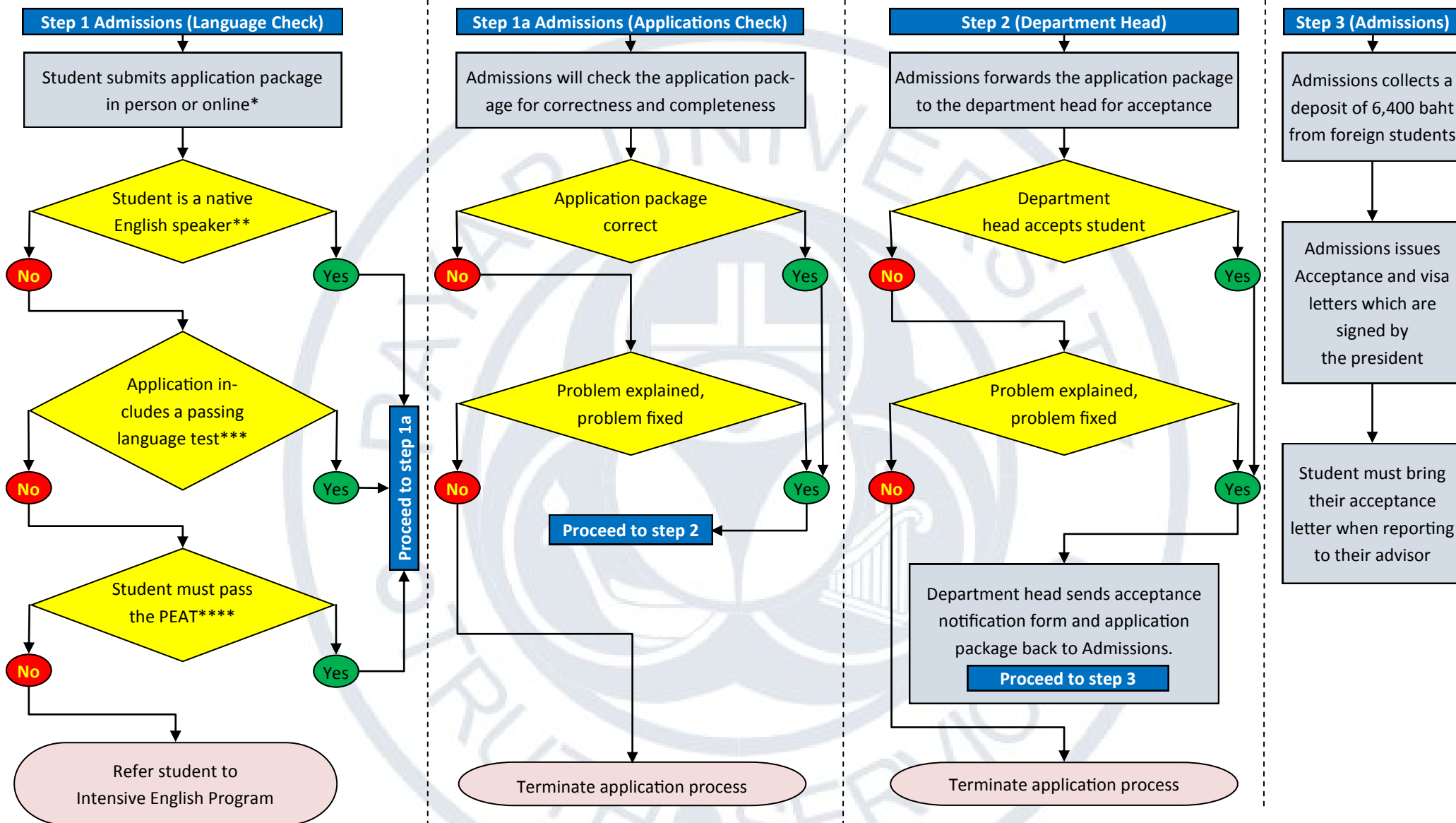


# Flowchart for admission into the International Graduate Programs

The admission process takes approximately 10 working days plus additional days for the acceptance and visa letters sent back to the student.



*\*All foreign transcripts must be sent directly to the admissions office from the issuing school. Documents that cannot be sent from the issuing school must be stamped by the embassy or consulate representing the school that issued the education documents.*

*\*\*Comes from USA, UK, Australia, New Zealand, \*\*\*IMBA/Divinity score +500, TESOL (+550), Linguistics (+540), \*\*\*\*Payap English Assessment Test*

**Payap University Admissions Office**

Phone: (+66) 53-851-478 Ext 241

Email: [admissions\\_ic@payap.ac.th](mailto:admissions_ic@payap.ac.th)

Map: <http://g.co/maps/8wkzz>

Website: [ic.payap.ac.th](http://ic.payap.ac.th)